

EXplore 171 NIR backscattering sensor in compact design



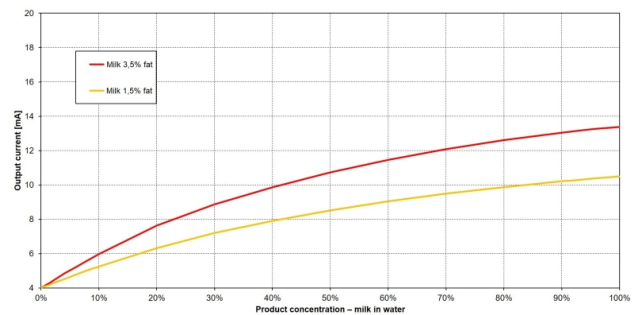
- » Compact design with integrated amplifier
- » Durable sapphire lens
- » Hygienic Design, CIP/SIP-capable
- » LED light source guarantees a durable and stable signal
- » No calibration and parametrisation necessary

EXplore 171 is a compact NIR turbidity sensor for monitoring production processes in the food industry, e.g. in dairies, as well as in many areas of other process applications with medium and high turbidity.

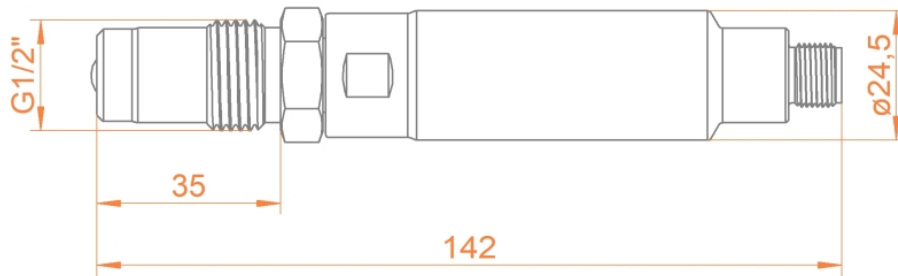
Specifications

Max measuring range:	0-100 %
Resolution:	0,1 %
Accuracy:	± 1,5 % from measurement value
Reproducibility:	≤ 1 % from final value
Wavelength:	850 nm
Light source:	LED
Material:	Stainless steel 1.4435 (316L)
Surface:	e-polished Ra <0,37 µm
Lens:	Sapphire
Supply voltage:	24 V DC
Process connection:	Thread G1/2"
Process temperature:	-10...90 °C, 135 °C max. 2 hours (SIP cycle)
Process pressure:	0...20 bar
Electrical connection:	M12 connector 5-pin
Interfaces:	4...20 mA
Protection class:	IP69 (incl. connection cable)

Typical Measurements



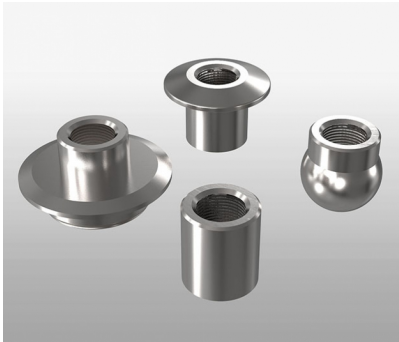
EXplore 171 NIR backscattering sensor in compact design



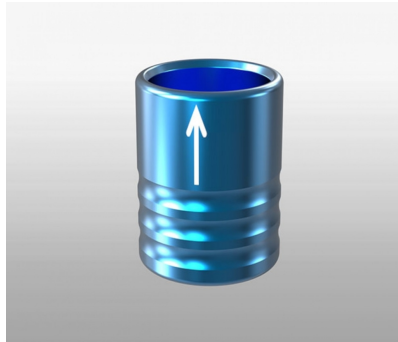
Order code

Code	Measuring range	Delivery time
A	0...100 % turbidity	3 Weeks
Code	Material (wetted parts)	Delivery time
4435	Stainless steel 1.4435 / 316L	3 Weeks
Code	Sealing material (wetted sealings)	Delivery time
MET	Metal sealing (without elastomer)	3 Weeks
Code	Process connection	Delivery time
G12	Thread G1/2"	3 Weeks
Code	Interface	Delivery time
A4	Analogue 4...20 mA	3 Weeks

Accessories



Weld-in socket and process adapters



Reference normal for EXplore 171